



EASY320 SERIES RAILING INSTALLATION INSTRUCTIONS

SAFETY FIRST: Wear protective goggles when using power tools. Use a safety harness if your work at an elevated site and a fall may cause an injury. It is the installer's responsibility to make sure railings are assembled and installed according to these instructions.

Tools you will need:	Tape Measure	#2 Square or Phillips Bit
	Power Drill	Compound Miter Saw
	Drill Bits 11/64" and 1/8"	Speed Square

1. **Check** all parts for any damage in transit. Keep the protective film on for as long as practical during the assembly. READ all the instructions before starting.
2. **Examine Fig. 1 and 2 below** noting the location of parts and dimensions. Determine and mark locations of posts. Trim posts if needed, the total lengths should be: **42"H**: Deck post: 40 1/4"; Fascia post: 50 1/4". **36"H**: Deck post: 34 1/4"; Fascia post: 44 1/4"

Post Installation Notes: ATTENTION! Posts must be attached to framing members. For proper and safe installation you must add sufficient blocking, backing plates or other reinforcements as needed to reliably support posts. **Deck posts:** the surface under post flanges must be flat. If necessary flange holes can be drilled out for 1/4" fasteners. To avoid material stress all fasteners must be attached perpendicular to the flange. **Fascia posts:** make sure posts are at the same height above the deck: measure and mark 10" from the bottom of the post (this is your deck level). Insert plastic plugs into the bottom ends of the posts. Drill small drainage holes in the plug centers. Make sure all posts are plumb. **ACQ Lumber:** Check with your lumber supplier to determine if your newer deck is built with ACQ lumber. Its copper- based preservative has a corrosive effect on aluminum, and a physical barrier (thick poly film, etc.) is required for post surfaces in direct contact with your deck.

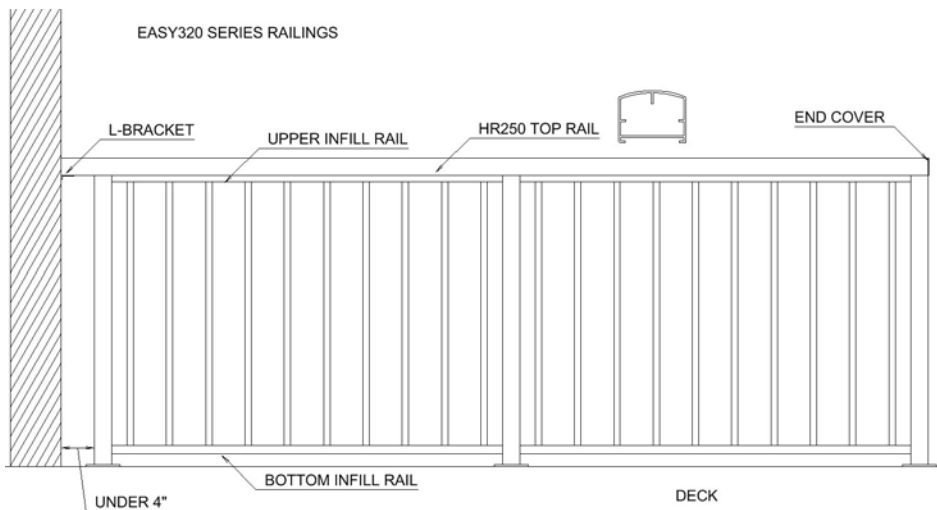


Fig 1

3. Attach posts to the deck using stainless steel hardware that is appropriate for the site conditions (examples: stainless steel lag screws, hex bolts, etc., not included).

- Cut Infill Rails** (if needed). Carefully measure and record distance between posts where shorter sections are needed. Leave 1-5/8" or more from each end to the nearest pair of predrilled holes. This can be accomplished by choosing the center of the rail either at a center picket or at a midway point between two pickets. For additional help with cutting rails visit www.easyrailings.com/resource.html

Cut upper and bottom infill rails to your measurements. For best results use a compound miter saw with a thin kerf carbide blade. Drill connector holes on both ends of top and bottom rails.

- Picket Section Assembly:** Drive #8x1" screws through pre-drilled holes in the upper and bottom infill rails into screw chases in the pickets. Tip: For easier assembly put a rail on two supports, secure temporarily with clamps or screws. Insert all screws in the holes; drive screws in the channels. Do not over-tighten. Lay the rail with pickets on a side, attach the other rail.

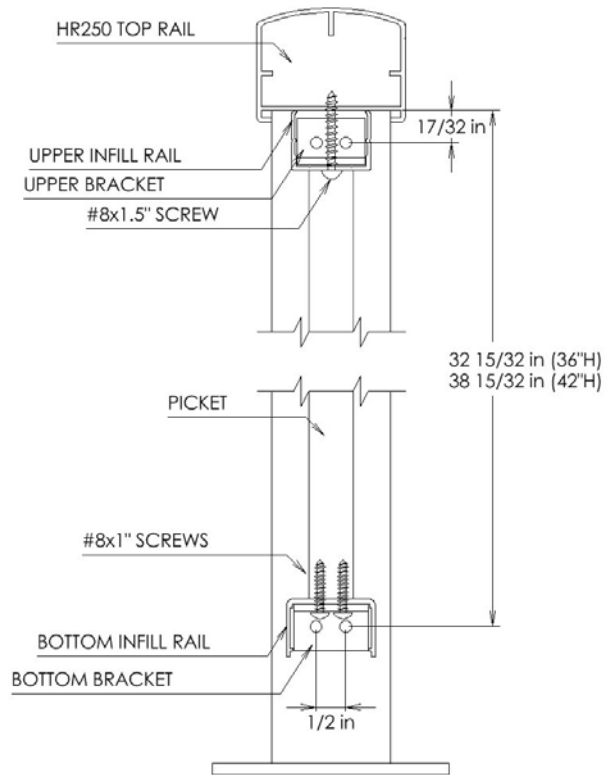


Fig. 2

- Attach Assembled Picket Infill Sections to Posts:** See Fig 2 for pilot hole locations. Pre-drill posts with the 11/64" drill. Attach Bottom Brackets to opposing posts. Set the picket section on the bottom brackets, and attach Upper Brackets to the posts with #10x3/4" screws.
- Cut and Install HR250 Top Rails.** Start with longer rails. Plan splices over posts. Leave appropriate extra lengths for angle cuts. For longer spans, assemble rails using Splice Connectors. Insert a Splice Connector 4" into one of the handrail pieces. Drill a pilot hole through the bottom of the handrail and the Connector, about 3" from the edge; drive a #10 x 3/4" screw through both parts. Slide the other piece of the handrail onto the connector and fasten in the same fashion.

For 90 degree connections use CN250 connectors. Draw a center line on the end of the rails to be connected at a corner. See Fig 3 for drilling locations. Mark and drill pilot holes in both rails. Insert and attach Corner Connectors to the longer rails using two #10 x 3/4" screws per side.

- Starting with shorter sides place assembled rails on top of the posts. Temporarily secure the rails in place with masking tape, leaving some slack so you are able to lift the corner side of that rail about 1/2". Working with a helper place longer assembled rails on top of the posts; slide attached Corner Connectors into the shorter rails. Fasten the Top Rails to Upper Infill Rails with #8x1.5" screws every 16", for pilot holes use 1/8" drill bit.
- Remove any remaining protective film, check and tighten all connections. You are done!

Fig. 3

